

VMS-C HD

Ideal for traffic management needs alongside pedestrian or cycle paths. The VMS-C compact variable messaging sign is our smallest VMS, though this lightweight option does not compromise on high-quality display, boasting a 32 x 32 pixel range and full colour LEDs, allowing for the creation of multiple graphics.



<p>Display</p> <ul style="list-style-type: none"> • Screen Size – 597mm x 597mm • Screen Resolution – 32 x 32 Full Colour RGB • Text – Up to 5 lines or MS4 Style Pictograms 	<p>Dimensions</p> <ul style="list-style-type: none"> • Footprint – 600mm x 450mm • Height – 1900mm • Weight – (approx.) 110kg (Specification dependent)
<p>Power</p> <ul style="list-style-type: none"> • 12v AGM Sealed System • Solar – 50-100w Options • Remote Low Voltage Alert System • Run time – Up to 7 days 	<p>Security</p> <ul style="list-style-type: none"> • Removable Handle • Secure battery compartment • Web Based GPS Tracking** • Battery Compartment Padlocks

Why choose us?


We're an industry leading manufacturer and supplier for the hire of mobile VMS Variable Message Signs and Speed Reduction Equipment. All products are built in-house from local materials, and we pride ourselves on being British built - along with providing exceptional customer care from manufacture to delivery and beyond.




For more information or to obtain a quote, please contact us:

Roadside Technologies Ltd
 Griffin Close
 Ireland Industrial Estate
 Staveley
 Chesterfield
 S43 3LJ

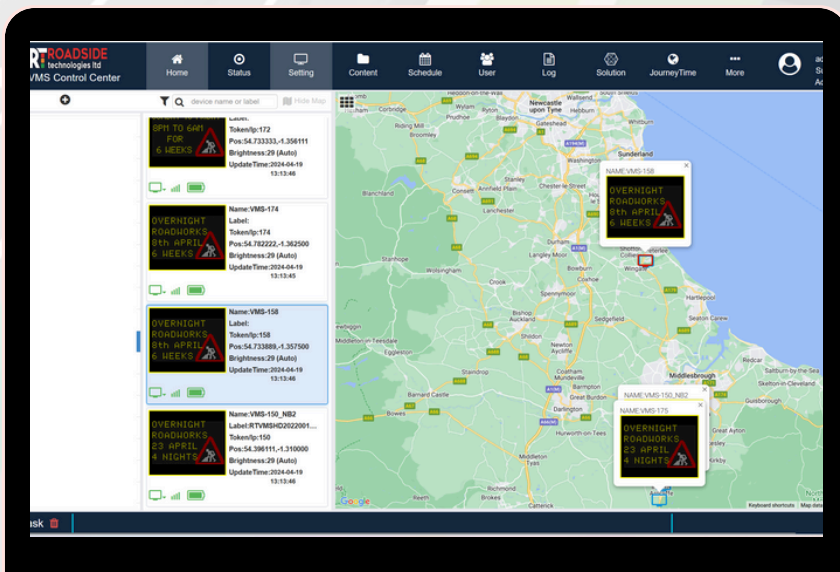
 www.roadside-technologies.co.uk

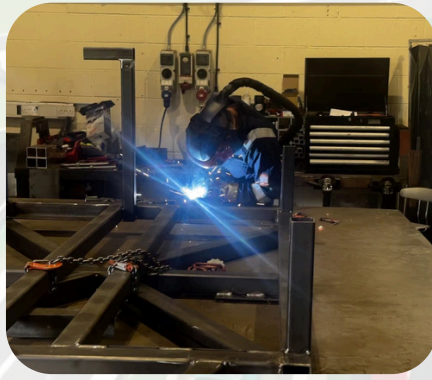
 info@roadside-technologies.co.uk

 01246 792000

Roadside Cloud Services - UK Hosted Web Services

Operational changes within the highways can occur at any time. The Roadside Cloud Services Web Portal empowers users to promptly oversee VMS assets. Users can efficiently monitor GPS asset locations and modify messages to keep motorists informed about current road conditions. Leveraging the 4G/5G remote connections within each asset, users can reduce travel expenses by seamlessly accessing each asset from any internet-enabled device.





 **MADE IN
BRITAIN**



Build and supply for projects of any scale within shorter deadlines.



Reduced lead times as we carry stock for most products and components.



Control product quality and implement new technologies and modifications faster.



Integrate additional technologies to build new solutions to offer greater product value.



Inhouse fabrication and painting teams to produce customised solutions.



We are proud to be building British products which make a difference on the UK highway.



**ROADSIDE
TECHNOLOGIES**